

Solan iStop

{ intelligent stop }



Safe loading & unloading is now possible in any logistics center

PATENT PENDING



2X

NEW

2025
i-Stop X 2:
Double the Lock,
Zero the Risk

2026
USA Standard
5mm Thickness.
Now, stronger
than ever

Why i-Stop?

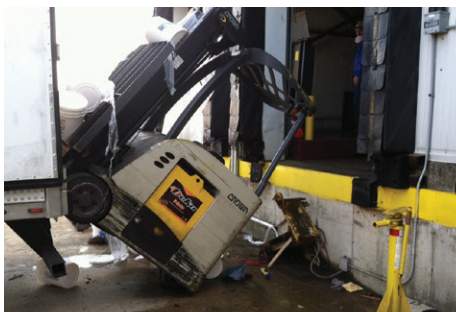
The i-Stop system is designed precisely to prevent recurrence of accidents at logistic centers. The truck driver who park at the platform will not be able to start unloading or loading goods before securing the truck's tires with Solan's unique wireless stop-breaker: the i-Stop. Only when i-Stop is attached to the truck wheels it become possible to open the logistics center's platform door and the truck can no longer move from its place. Now the forklift driver can perform his duties safely.

Using a Smart alert system

If the driver will decide to move the i-Stop there will be immediate two kinds of alerts: a 5/10 second alarm horn warning that will allow the forklift driver to get out of the truck and back to the platform safely. In addition, a red LED light will appear indicating that whoever is currently inside the truck must return to the platform.

The challenge: how to maintain safety in a high pressure logistic environment

Modern logistic centers are based on rapid passage of goods, and on maintaining efficiency in cargo loading and unloading. Because of this pressure, many accidents occur during unloading and loading. Most of these relate to lack of communication between the truck driver and the workers at the loading platform. Indeed, there were many cases where forklifts were trapped in a moving truck, or fell as the truck pulled away from the platform.



i-stop is needed to prevent accident like this one



Intelligent Stop in Action

With Solan i-Stop System a truck will no longer move with a forklift inside.

i-Stop includes:

- Control unit 110-220v / 24v
- Two traffic lights (green & red alert)
- led lights 4" (100mm) + sound
- Metal, water resistant i-Stop unit with internal wireless control unit

Advantages of the i-Stop System

- ✓ i-Stop is a wireless system that communicates with the logistics center without the need for electrical wiring or communication cables.
- ✓ i-Stop will not break under any truck weight. It is made of metal and has a unique global control unit.
- ✓ The existing i-Stop control system function with a battery that can be replaced once a year.
- ✓ Easy maintenance with no electric cables wear and tear.
- ✓ i-Stop does not disrupt existing communication frequencies in the logistics center.
- ✓ The system does not limit loading or unloading. A ByPass button enables opening doors and regular maintenance work by authorize personnel.
- ✓ Conformity: The system works with any kind of truck and any kind of electrical door.
- ✓ The system will function smoothly also in places that has no electrical doors.
- ✓ The system uses traffic lights to monitor the precise wheel placement of i-Stop, in order to improve loading and unloading safety.
- ✓ Prevents drivers safety errors.
- ✓ Affordable compared with other systems in the market.



How does i-Stop work?

i-Stop is an electronic stop brace that transmits the truck's wheel safety data to a control unit that monitors electromechanical systems within the Logistics center. It can also work with a ramp without an electric door using the safety traffic lights. As long as the truck's wheel is not secured, the electric door inside the logistics center will not open, preventing load / unload of the truck.

A green light will be lit in the direction of the truck driver, and **a red light** will light up inside the logistics center near the ramp door.

When the truck's wheel is secured there will be 3 actions:

1. It will be possible to open an electric door within the logistics center in a controlled and secure manner.
2. **A green light** will light up inside the logistics center, allowing the forklift driver to start working (the wheel is secure).
3. **A red light** will be lit on the outside of the loading door to inform the truck driver not to move while work is taking place inside!

Feel free to contact us for more information and visit us at: www.solansystems.com



SOLAN 
Systems

Solan International
Mobile: +972-54-560-2570
Office: +972-9-766-8352
Email: info@solansystems.com

Solan Partner Europe
France Mobile: + 33 6 37 41 92 41
<http://solansystems.com/france>
Email: sylvia@solansystems.com